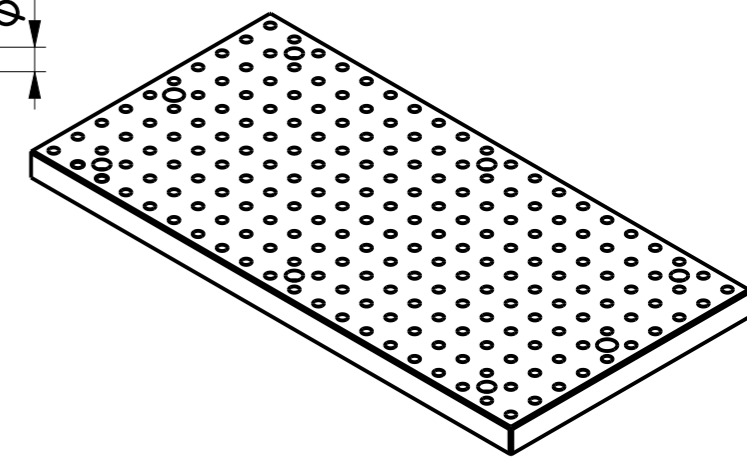
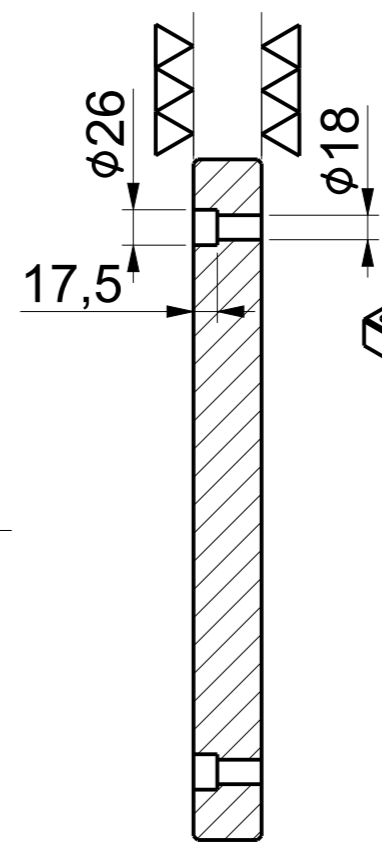


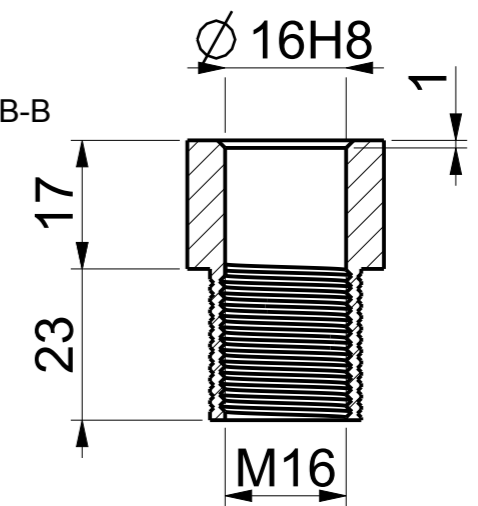
M16

$\text{⌀}30\text{H7}$   
(2x)

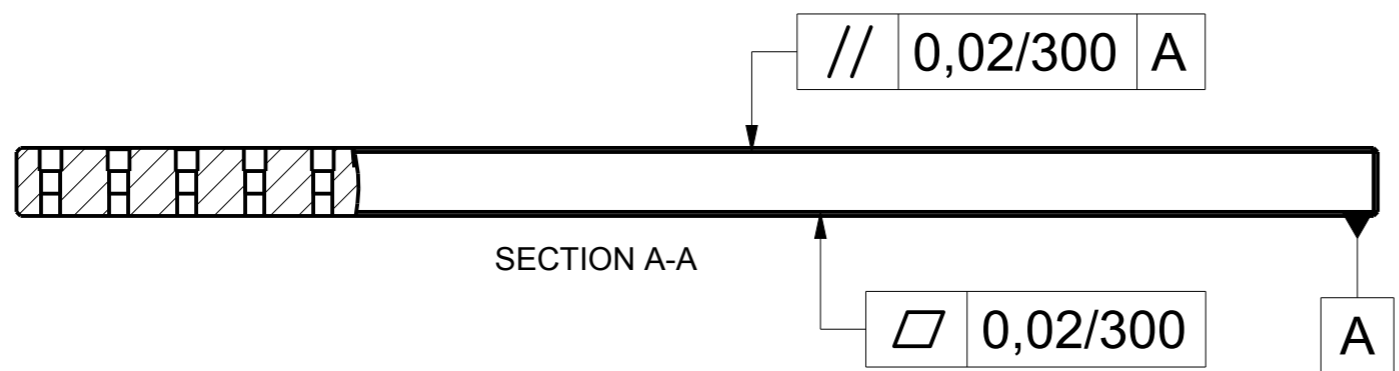
$\perp$  0,02/300 A



SECTION B-B



AFTER ASSEMBLY



**RECTANGULAR BASE PLATE GRID HOLE**

Art. No. FG/WH/BASPL/RCG16NP005  
Model. No. BPG/RT/5001000-16